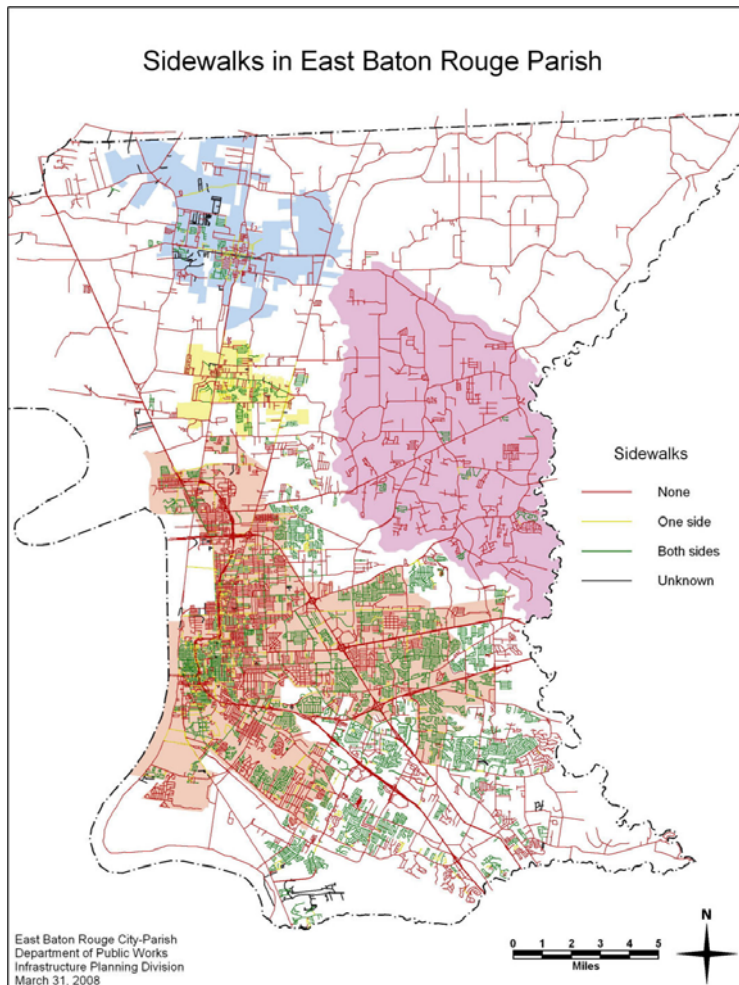


Geographic Information System

The Baton Rouge City-Parish Department of Public Works uses GIS technology to manage City-Parish infrastructure and movable assets for which it is responsible. This includes maintaining an up-to-date inventory of roads, bridges, sewer infrastructure, drainage ways, and public buildings; using GIS to identify and schedule maintenance activities; using GIS to monitor vehicle fleet activity; and, using GIS to plan for future infrastructure growth.

A Geographic Information System (GIS) is “a computer system capable of assembling, storing, manipulating, and displaying geographically referenced information – data identified according to their locations.” – USGS

GIS Tasks	Task Examples	
	Sewer	Road Maintenance
Build and maintain data	Update sewer line data	Update pavement condition data
Provide the public with information and maps	Tell a potential developer whether public sewer is available	Inform the public when and where road maintenance activities will be
Coordinate with other City-Parish departments	Access current land use data for capacity analysis	Inform Police, Fire and EMS of scheduled road closures
Support decision-makers using GIS analysis techniques	Model to determine whether the system has capacity for a proposed development	Analyze to schedule road maintenance and appropriate detours



Map showing the extent of sidewalks in East Baton Rouge Parish. The existence of sidewalks is one of many attributes tied to the street layer. This data can be used to plan future sidewalk projects, coordinate potential sidewalk improvements with planned street, sewer or drainage improvements, or simply provide public information.

Positions	Experience	Pay Range
Engineering Technician	4 years + certification	\$34,820 - \$48,199
Engineering Aide III	4 years	\$31,583 - \$43,718
Engineering Aide II	3 years	\$27,282 - \$37,765
Engineering Aide I	2 years	\$24,746 - \$34,254
Engineering Aide Trainee	0 years	\$20,359 - \$28,181
Student Engineer (part-time position)	Must be in college	\$9.76/hour

For more information, contact the Infrastructure Planning Division at dpwipd@brgov.com or (225) 389-5491. For information on applying for a job, visit <http://brgov.com/dept/HR/>.